

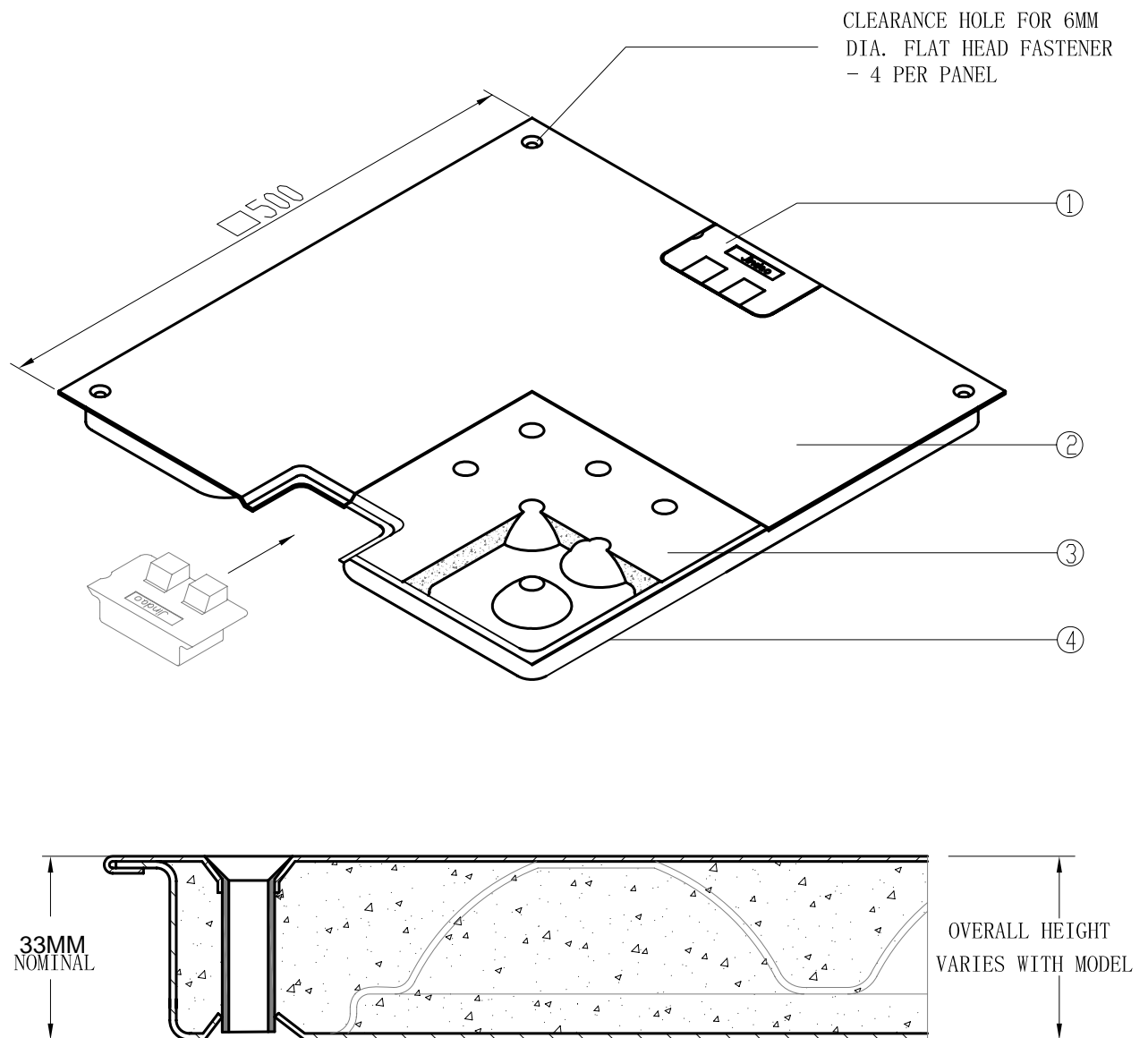
SUPPLEMENTARY NOTES

1. INNER AND OUTER STEEL SURFACES PHOSPHATE TREATED PRIOR TO POWDER COATING AND FILLING
2. PANEL IS PROTECTED BY POWDER COAT EPOXY FINISH
3. LIGHT WEIGHT CEMENT INFILL

PERFORMANCE SELECTION CHART

| PANEL MODEL | CONCENTRATED LOAD | | UNIFORM LOAD | | ULTIMATE LOAD | |
|----------------|-------------------|------|------------------------|----------------------|---------------|-------|
| | (LBS) | (N) | (LBS/FT ²) | (N/M ²) | (LBS) | (N) |
| OA800A | 800 | 3560 | 355 | 17000 | 2400 | 10700 |
| OA1000A | 1000 | 4450 | 480 | 23000 | 3000 | 13360 |
| OA1250A | 1250 | 5563 | 689 | 33000 | 3750 | 16700 |

| | | | |
|----------|--------------|--|------|
| VERSION | V 2.0 | LINFLOOR FLOORS, INC. www.linfloor.net BARE FINISHED OA PANEL | PAGE |
| DATE | | | 1 |
| DRAWN | ZHONGJIE PAN | | |
| APPROVED | YINGLIN PAN | | |



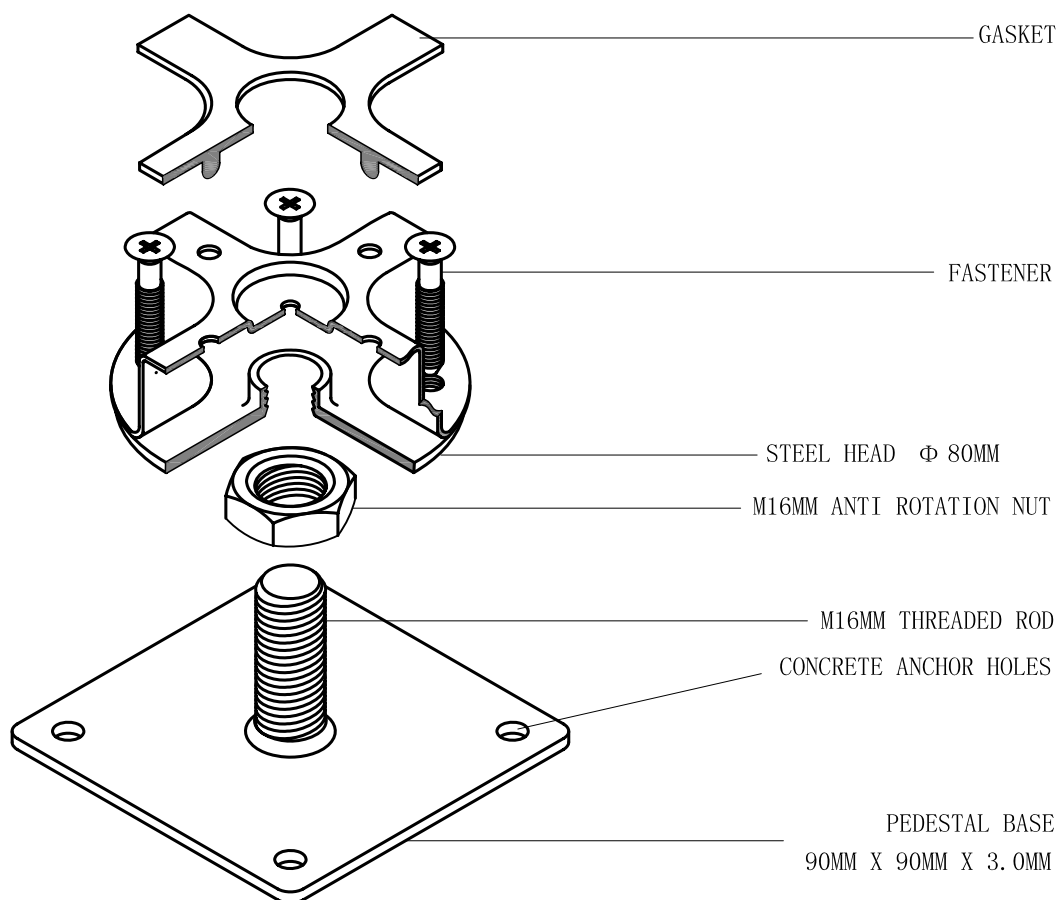
SUPPLEMENTARY NOTES

1. CUTOUT LID
2. INNER AND OUTER STEEL SURFACES PHOSPHATE TREATED PRIOR TO POWDER COATING AND FILLING
3. LIGHT WEIGHT CEMENT INFILL
4. PANEL IS PROTECTED BY POWDER COAT EPOXY FINISH

PERFORMANCE SELECTION CHART

| PANEL MODEL | CONCENTRATED LOAD | | UNIFORM LOAD | | ULTIMATE LOAD | |
|----------------|-------------------|------|------------------------|----------------------|---------------|-------|
| | (LBS) | (N) | (LBS/FT ²) | (N/M ²) | (LBS) | (N) |
| OA800C | 800 | 3560 | 355 | 17000 | 2400 | 10700 |
| OA1000C | 1000 | 4450 | 480 | 23000 | 3000 | 13360 |
| OA1250C | 1250 | 5563 | 689 | 33000 | 3750 | 16700 |

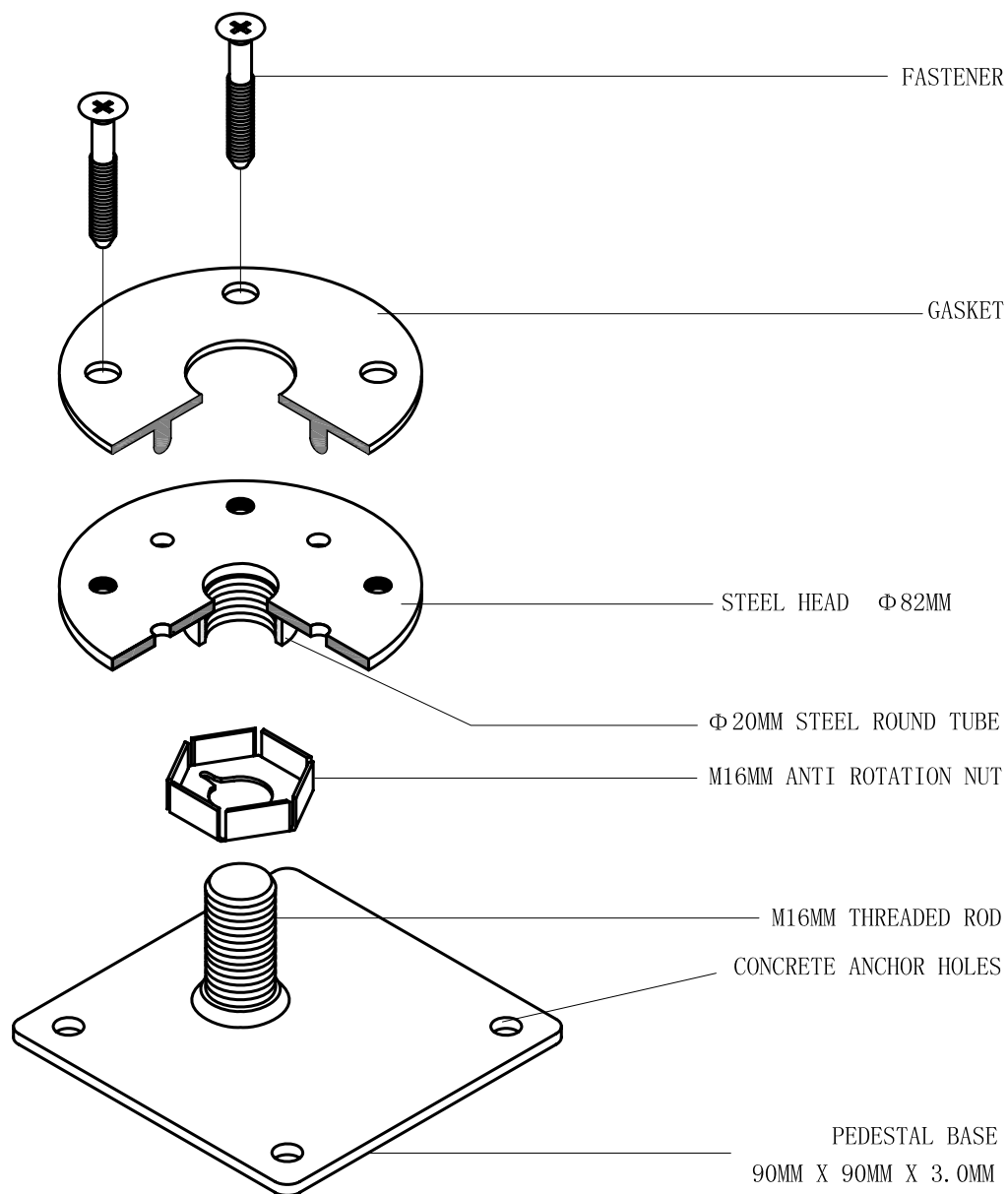
| | | | |
|----------|--------------|--|---|
| VERSION | V 2.0 | LINFLOOR FLOORS, INC. www.linfloor.net BARE FINISHED DUAL CUTOUT OA PANEL | PAGE |
| DATE | | |  |
| DRAWN | ZHONGJIE PAN | | |
| APPROVED | YINGLIN PAN | | |



SUPPLEMENTARY NOTES

1. PRODUCT MODEL: OA-PST-LPXXX
2. APPLICABLE: FFH 50-90MM,
VERTICAL LOAD 18KN AT CENTER
3. ADJUSTABLE RANGE: ± 6 - ± 15 MM
4. ZINC PLATED

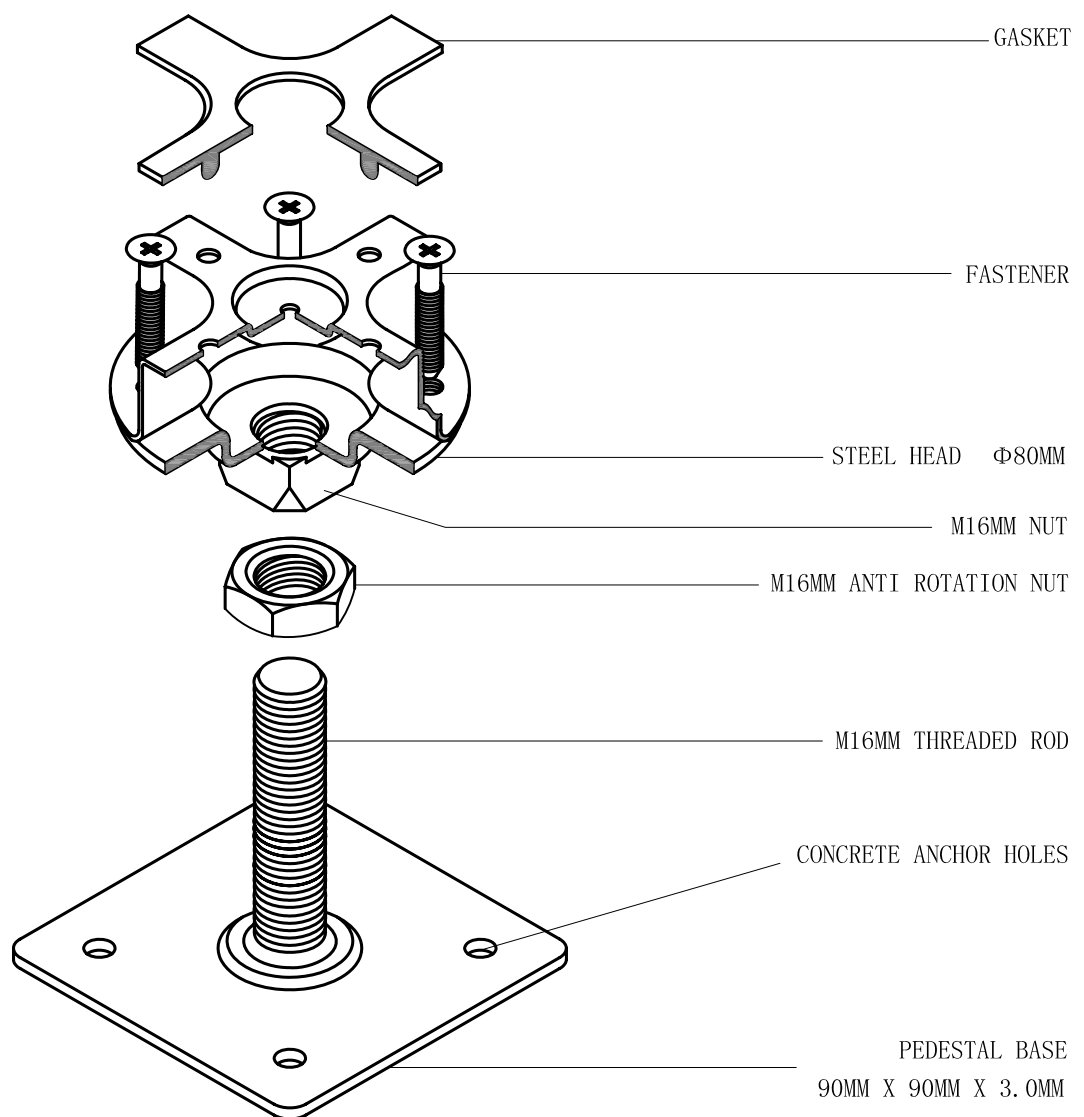
| | | | |
|----------|--------------|--|---|
| VERSION | V 2.0 | LINFLOOR FLOORS, INC. www.linfloor.net LOW-PROFILE CRUCIFORM CORNER-LOCK PEDESTAL | PAGE |
| DATE | | |  |
| DRAWN | ZHONGJIE PAN | | |
| APPROVED | YINGLIN PAN | | |



SUPPLEMENTARY NOTES

1. PRODUCT MODEL: OA-PST-LPXXX
2. APPLICABLE: FFH 50-90MM,
VERTICAL LOAD 18KN AT CENTER
3. ADJUSTABLE RANGE: $\pm 2.5 - \pm 15$ MM
4. ZINC PLATED

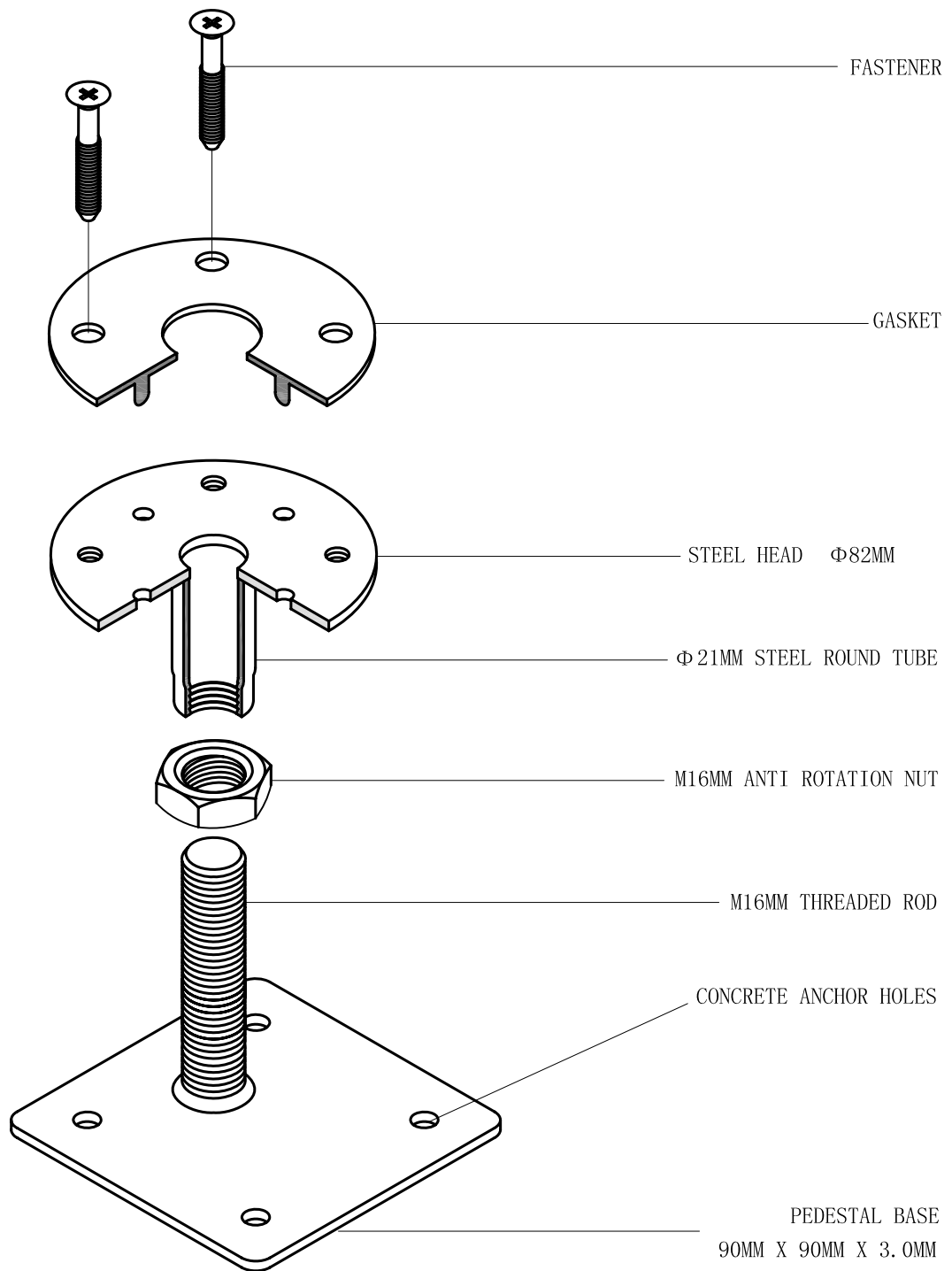
| | | | |
|----------|--------------|--|------|
| VERSION | V 2.0 | LINFLOOR FLOORS, INC. www.linfloor.net LOW-PROFILE FLAT-HEAD PEDESTAL | PAGE |
| DATE | | | 4 |
| DRAWN | ZHONGJIE PAN | | |
| APPROVED | YINGLIN PAN | | |



SUPPLEMENTARY NOTES

1. PRODUCT MODEL: OA-PST-NPXXX
2. APPLICABLE: FFH 100-600MM,
VERTICAL LOAD 18KN AT CENTER
3. ADJUSTABLE RANGE: ± 15 MM
4. ZINC PLATED

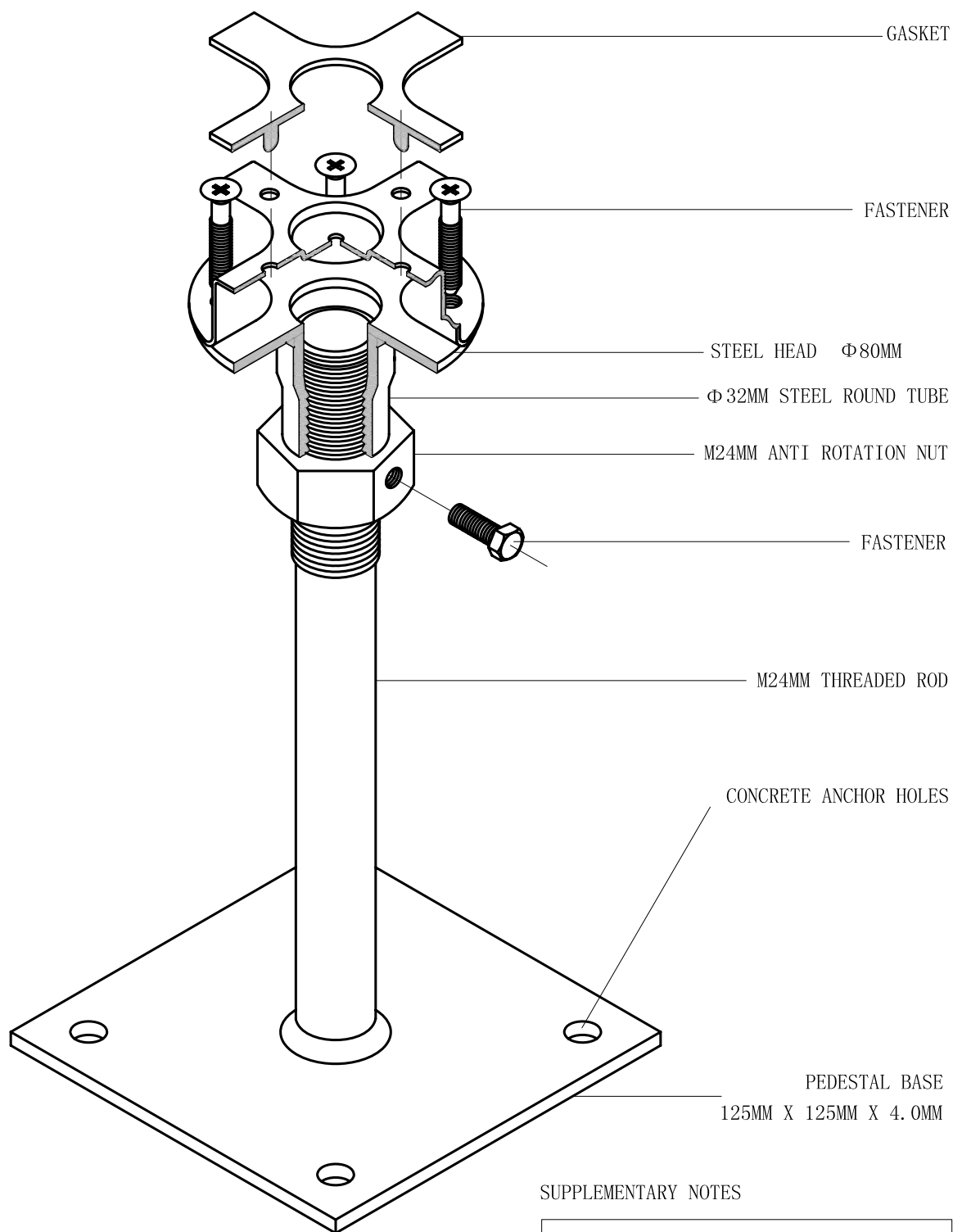
| | | | |
|----------|--------------|---|------|
| VERSION | V 2.0 | LINFLOOR FLOORS, INC. www.linfloor.net STANDARD CRUCIFORM CORNER-LOCK PEDESTAL | PAGE |
| DATE | | | 5 |
| DRAWN | ZHONGJIE PAN | | |
| APPROVED | YINGLIN PAN | | |



SUPPLEMENTARY NOTES

1. PRODUCT MODEL: OA-PST-NP-PXXX
2. APPLICABLE: FFH 100-600MM,
VERTICAL LOAD 18KN AT CENTER
3. ADJUSTABLE RANGE: $\pm 15\text{MM}$
4. ZINC PLATED

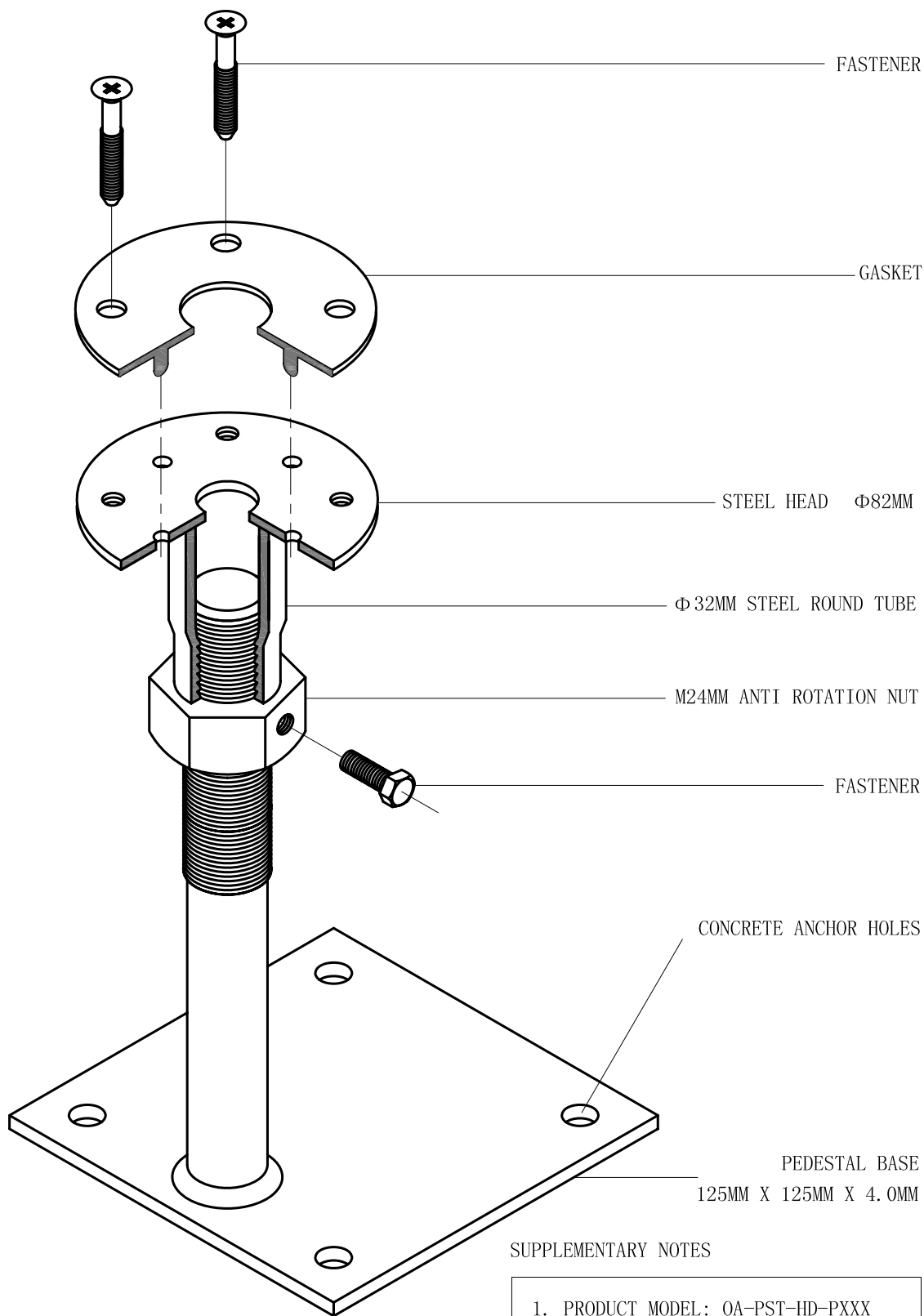
| | | | |
|----------|--------------|---|---|
| VERSION | V 2.0 | LINFLOOR FLOORS, INC. www.linfloor.net STANDARD FLAT-HEAD PEDESTAL | PAGE |
| DATE | | |  |
| DRAWN | ZHONGJIE PAN | | |
| APPROVED | YINGLIN PAN | | |



SUPPLEMENTARY NOTES

1. PRODUCT MODEL: OA-PST-HDXXX
2. APPLICABLE: FFH 300-600MM,
VERTICAL LOAD 18KN AT CENTER
3. ADJUSTABLE RANGE: ± 20 MM
4. ZINC PLATED

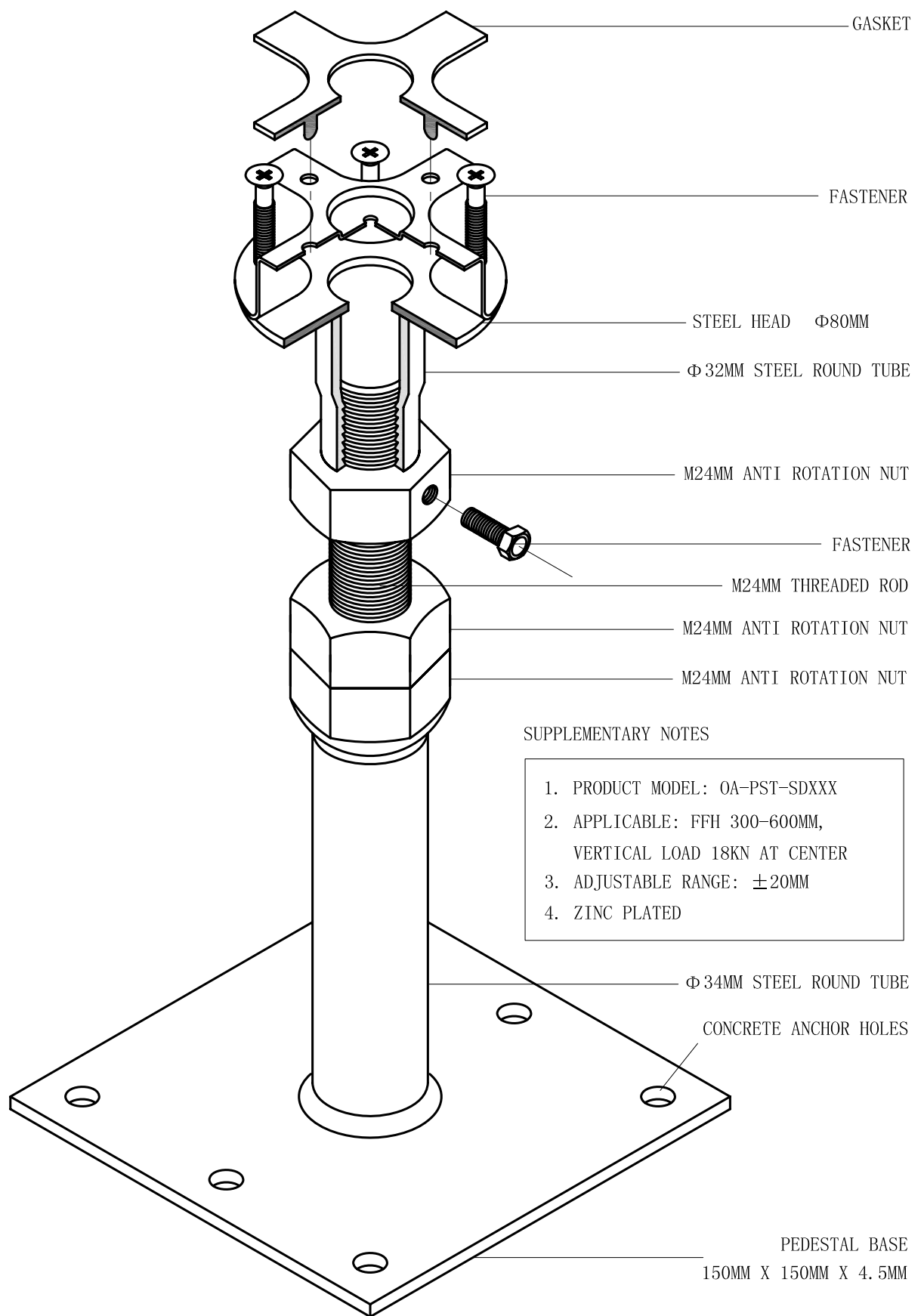
| | | | |
|----------|--------------|--|------|
| VERSION | V 2.0 | LINFLOOR FLOORS, INC. www.linfloor.net HEAVY-DUTY CRUCIFORM CORNER-LOCK PEDESTAL | PAGE |
| DATE | | | 7 |
| DRAWN | ZHONGJIE PAN | | |
| APPROVED | YINGLIN PAN | | |



SUPPLEMENTARY NOTES

1. PRODUCT MODEL: OA-PST-HD-PXXX
2. APPLICABLE: FFH 300-600MM,
VERTICAL LOAD 18KN AT CENTER
3. ADJUSTABLE RANGE: $\pm 20\text{MM}$
4. ZINC PLATED

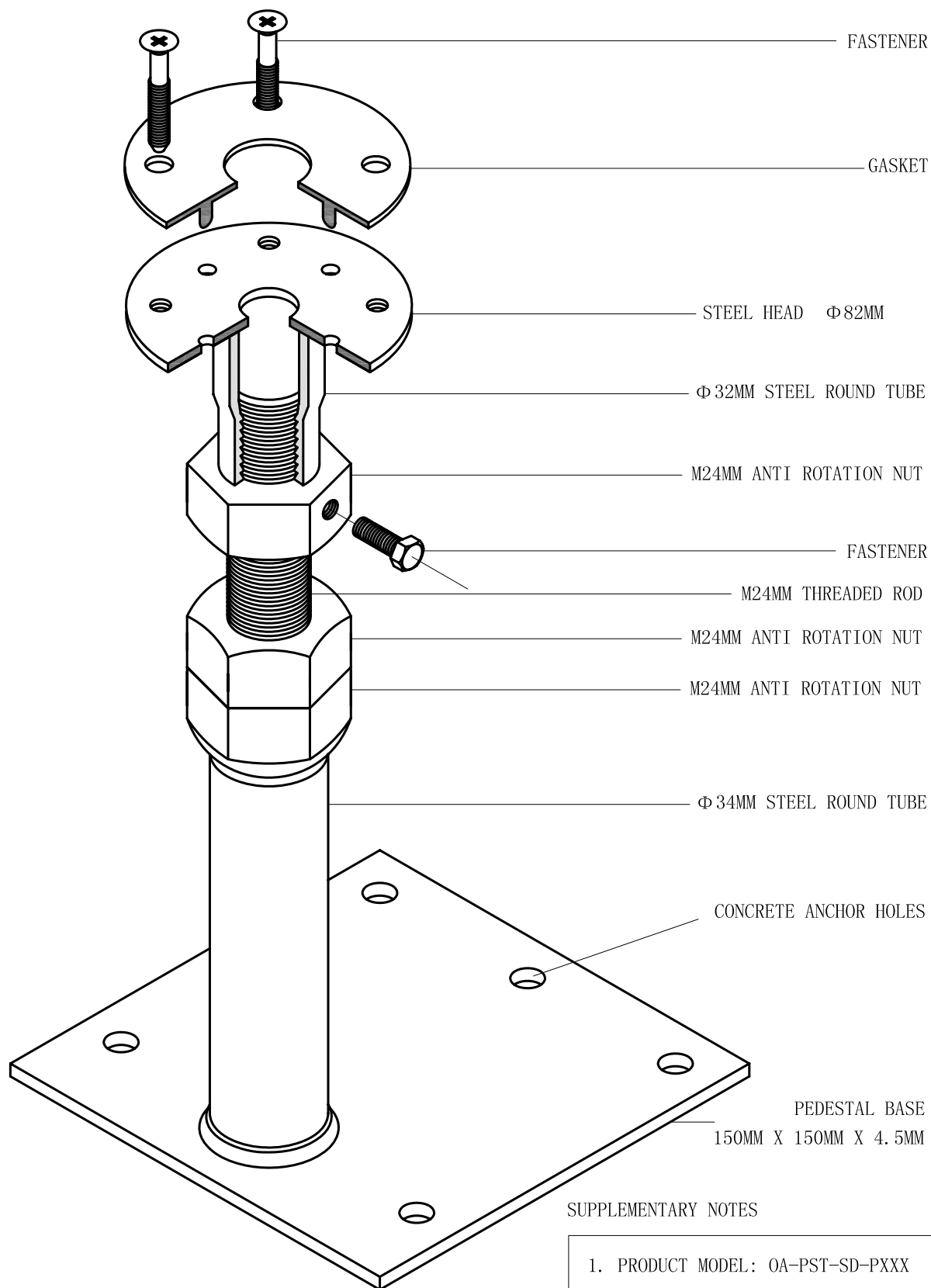
| | | | |
|----------|--------------|--|------|
| VERSION | V 2.0 | LINFLOOR FLOORS, INC. www.linfloor.net HEAVY-DUTY FLAT-HEAD PEDESTAL | PAGE |
| DATE | | | |
| DRAWN | ZHONGJIE PAN | | |
| APPROVED | YINGLIN PAN | | |



SUPPLEMENTARY NOTES

1. PRODUCT MODEL: OA-PST-SDXXX
2. APPLICABLE: FFH 300-600MM,
VERTICAL LOAD 18KN AT CENTER
3. ADJUSTABLE RANGE: $\pm 20\text{MM}$
4. ZINC PLATED

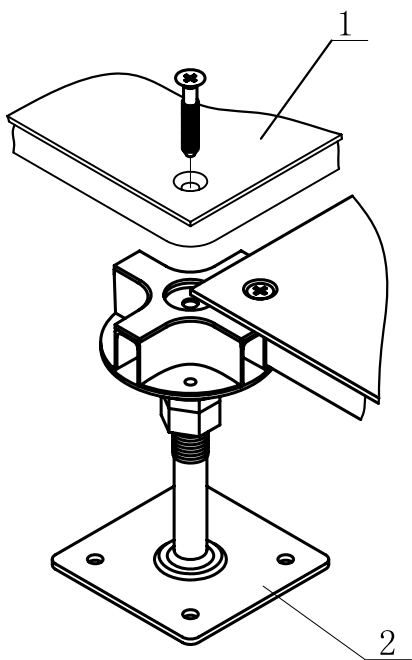
| | | | |
|----------|--------------|---|---|
| VERSION | V 2.0 | LINFLOOR FLOORS, INC. www.linfloor.net SUPER-HEAVY-DUTY CRUCIFORM COMER-LOCK PEDESTAL | PAGE |
| DATE | | |  |
| DRAWN | ZHONGJIE PAN | | |
| APPROVED | YINGLIN PAN | | |



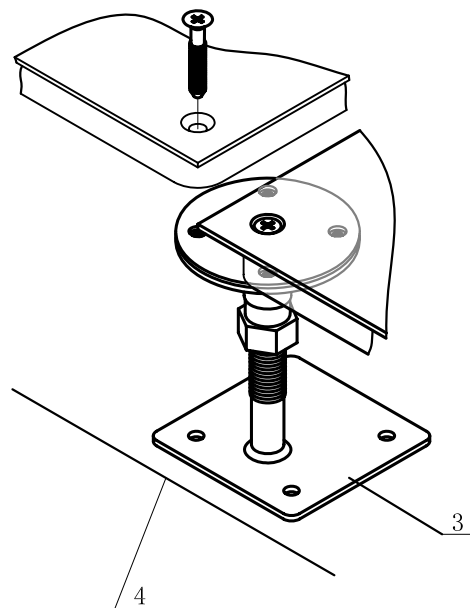
SUPPLEMENTARY NOTES

1. PRODUCT MODEL: OA-PST-SD-PXXX
2. APPLICABLE: FFH 300-600MM,
VERTICAL LOAD 18KN AT CENTER
3. ADJUSTABLE RANGE: ± 20 MM
4. ZINC PLATED

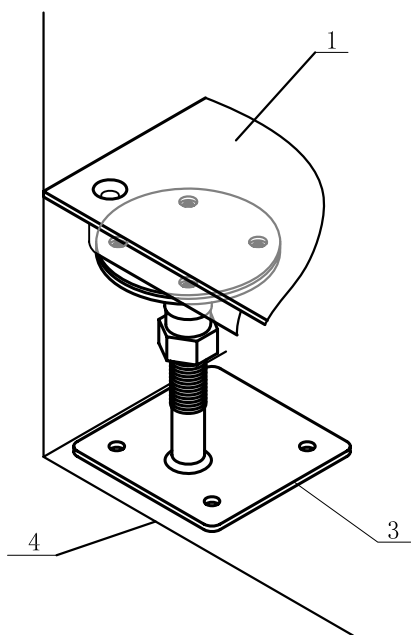
| | | | |
|----------|--------------|--|------|
| VERSION | V 2.0 | LINFLOOR FLOORS, INC. www.linfloor.net SUPER-HEAVY-DUTY FLAT-HEAD PEDESTAL | PAGE |
| DATE | | | 10 |
| DRAWN | ZHONGJIE PAN | | |
| APPROVED | YINGLIN PAN | | |



① NORMAL



② PERIMETER



③ CORNER

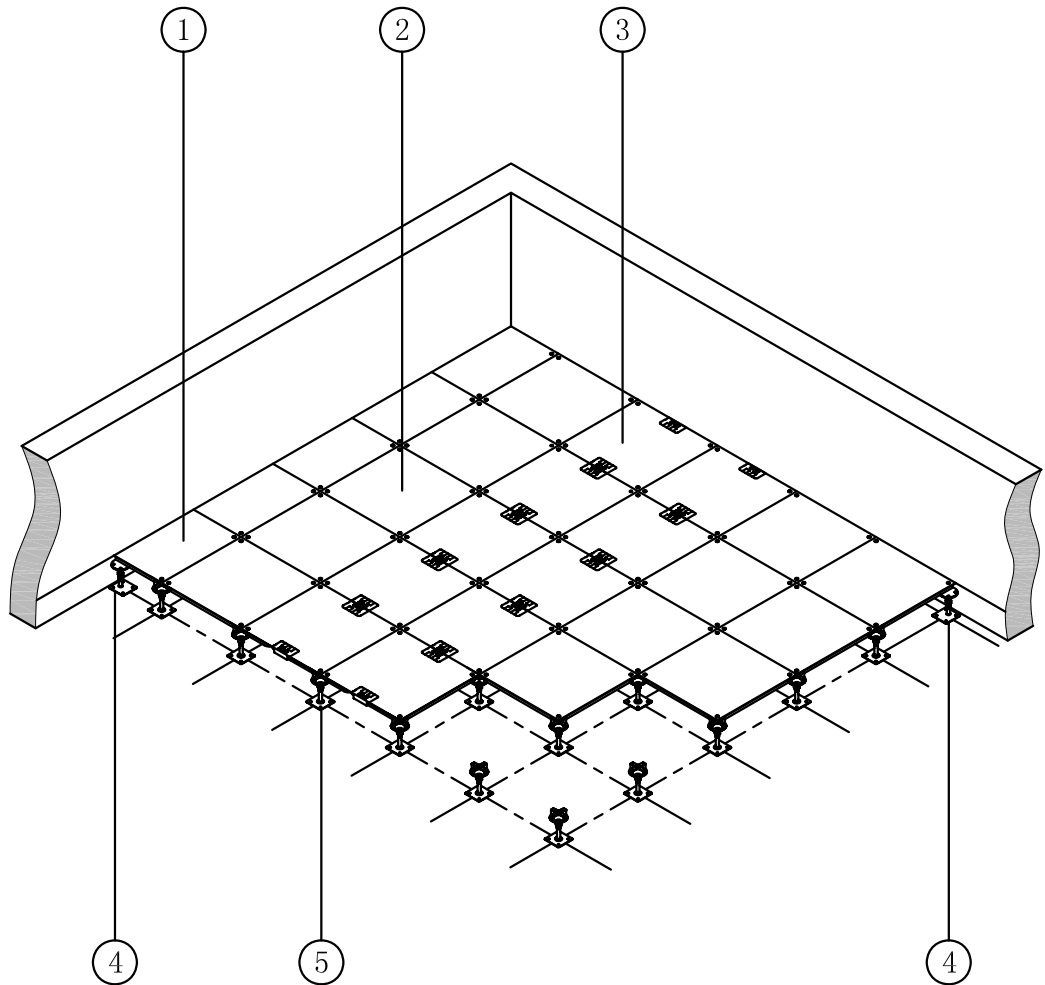
SUPPLEMENTARY NOTES

1. BARE FINISHED OA PANEL
2. STANDARD CRUCIFORM CORNER-LOCK PEDESTAL
3. STANDARD FLAT-HEAD PERIMETER PEDESTAL
4. WALL

① ② ③

BARE FINISHED OA PANEL & STANDARD PEDESTAL INSTALLATION

| | | | |
|----------|--------------|--|------|
| VERSION | V 2.0 | LINFLOOR FLOORS, INC. www.linfloor.net INSTALLATION ILLUSTRATION | PAGE |
| DATE | | | 11 |
| DRAWN | ZHONGJIE PAN | | |
| APPROVED | YINGLIN PAN | | |



SUPPLEMENTARY NOTES

1. CUTTING PANEL
2. BARE FINISHED OA PANEL
3. BARE FINISHED DUAL CUTOUT OA PANEL
4. PERIMETER PEDESTAL
5. CORNER-LOCK PEDESTAL

| | | | |
|----------|--------------|---|------|
| VERSION | V 2.0 | LINFLOOR FLOORS, INC. www.linfloor.net INSTALLATION VIEW | PAGE |
| DATE | | | 12 |
| DRAWN | ZHONGJIE PAN | | |
| APPROVED | YINGLIN PAN | | |