

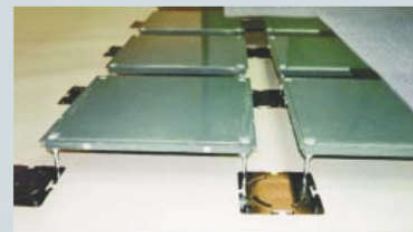
RAISED FLOOR SYSTEM

STEEL
CEMENTITIOUS
PANEL

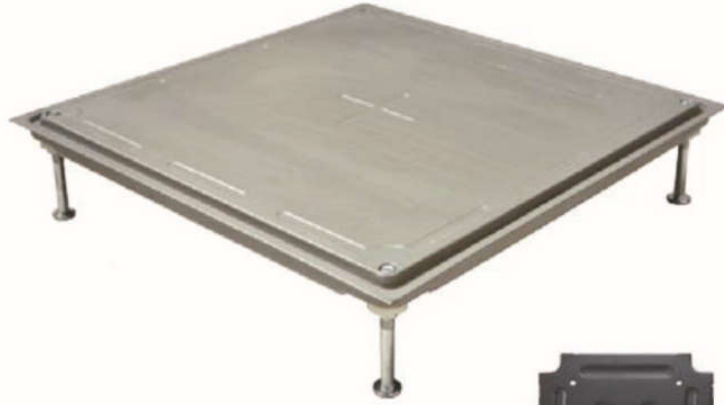
Linfloor™ ACCESS FLOORING SYSTEM **Finish Raised Access flooring System**

Structure

JS502 panel is elevated innovation and breakthrough, comparing with traditional access floor system. The new Netfloor-A series has the same advantage of Netfloor panel, but more convenient, environmental protected. Now it is widely used in Japan, Qatar, Bahrain, Korea and other countries.



RAISED FLOOR SYSTEM



ProductDescription

NF panel is supported by 4 pedestals and flank cap and central cap

Feature

- Environmental protected, economical and recyclable.
- Light weight, 1/2 to 2/3 of common access floor.
- Good conductivity and air leakage, flexible trunks for wires and cables.
- Specially designed for low finished flooring height



Size

500×500×25mm

Trunking

Trunking for wires is one of the advantages of NF trunking floor. Cover flank covers on basic panel edges after lying wires in trunks. Each panel stands separately, making it very convenient to lie flank cover before or after wires.



Technical Specification

| Linfloor™ JS 502 Intelligent Finish Raised Access flooring System | | | | | | | | | | | |
|---|--------------|---|---------|---------|------------------------------------|----------|-------------------|-------------------|--------------|--------|--------|
| Type | Panel Size | System Weight | Impact | Dynamic | Concentrated | Ultimate | Uniform | U-UDL | Rolling Load | | |
| | | Kg/M ² | Load Kg | Load Kn | Load Kn | Load Kn | Kn/M ² | Kn/M ² | 10 (N) | 10K(N) | |
| Bare | | | | | With Deflection 2.5mm ² | | | | | Passes | Passes |
| U800 | 500x500x25mm | ~30 | 60 | 3 | 3.6 | 10.8 | ≥12.5 | 23.8 | 3550 | 2670 | |
| U1000 | | ~32 | 60 | 4.5 | 4.5 | 13.5 | ≥14.79 | 32.2 | 4450 | 3550 | |
| U1250 | | ~34 | 70 | 5.5 | 5.7 | 17.1 | ≥25.39 | 49 | 5560 | 4450 | |
| Testing Qualifications | | CISCA 1986/87, MOBPF2 PS/SPU1992,BS EN 12825-2001,SJ/T10796-2001,PSB. | | | | | | | | | |
| Safety Factors*(min 2.0) | | 3 (PASS) | | | | | | | | | |
| Understructure | | Corner lock | | | | | | | | | |
| Fire Protection | | Non Combustible | | | | | | | | | |